



**ExpatArrivals**  
local info for global expats

# THE EXPAT'S GUIDE TO EDUCATION & SCHOOLS IN

# SINGAPORE



## CONTENTS

INTRODUCTION .....	2
PUBLIC SCHOOLS IN SINGAPORE .....	3
ADMISSION EXERCISE FOR INTERNATIONAL STUDENTS (AEIS) .....	3
PRIVATE AND INTERNATIONAL SCHOOLS IN SINGAPORE .....	6
ADMISSION TO PRIVATE AND INTERNATIONAL SCHOOLS .....	6
TUITION AND FEES .....	8
SCHOOL TERM AND SCHOOL DAY .....	8
HOMESCHOOLING .....	9
NURSERY SCHOOLS .....	9
TERTIARY EDUCATION.....	10
TIPS FOR CHOOSING A SCHOOL FOR YOUR CHILD .....	10
CURRICULUM .....	10
TEACHERS AND CLASS SIZES .....	11
PROXIMITY .....	11
NURSERY SCHOOLS .....	11
Rain Trees Kindergarten.....	12
Rosemount International School .....	12
INTERNATIONAL SCHOOLS.....	13
Chatsworth International School .....	13
Canadian International School.....	14
EtonHouse International School .....	16
GEMS World Academy (Singapore) .....	17
German European School Singapore .....	20
Integrated International School.....	22
ISS International School .....	23
Lycée Français de Singapour .....	25
Nexus International School Singapore.....	26
One World International School (OWIS).....	27
Singapore American School .....	29
Stamford American International School .....	30
Tanglin Trust School.....	31
United World College of South East Asia (UWCSEA) .....	34
FOR MORE INFORMATION.....	35

## INTRODUCTION

Singapore started out as a 19<sup>th</sup> century trading post and has transformed into one of the world's busiest ports. Today, skyscrapers stretch into the tropical skies above a bustling population made from a rich tapestry of cultures.

A city state that's concerned with leaving a legacy and striking a balance with nature, Singapore continues to attract thousands of expats seeking stability and prosperity.

Parents moving to Singapore have little to worry about when it comes to the quality of their children's education. The local schooling system is one of the best in the world, and in addition to Singapore's public and private schools, there's a wide selection of international schools that follow American, British and other international curricula.

Expats might initially be overwhelmed by the various councils and school classifications that fly about in acronym-loving Singapore. But having all of these regulatory bodies ensures that its schools maintain their high standards and ultimately makes finding a suitable school less stressful.

Singapore's public schools appeal to some expats because they teach in English and their fees are lower than private international schools. But they usually give priority to local students over permanent residents, and only consider students on other temporary visas after that.

*No matter where you're moving, few tasks can feel more daunting than selecting the best place for your children to continue their education, and the questions can feel endless: What curriculum is best? Will my child get the attention he needs? Will she be able to integrate back into our home system? Will she be prepared for college entrance exams? Can I afford it? Will he make friends easily? Will she overcome the language barrier?*

By contrast, Singaporean students need special permission from the Ministry of Education to attend private or international schools, so it's usually easier for expat parents to place their children in an international school.

In short, families moving to Singapore for the long-term should consider placing their children in a reputable public school for the winning combination of lower fees and a world-class education. But expats staying for the short-term will find international schools are easier to apply to from abroad, and their children will have a smoother transition from their school at home and back again.

The Expat Arrivals Schools Guide for Singapore sheds some light on the city-state's school system and provides some of insights parents will need to make the best decisions for their children, ensuring that their transition abroad is as seamless as possible.

## PUBLIC SCHOOLS IN SINGAPORE

For many parents moving overseas, deciding whether to enrol their children in a public or international school is easy. There may be a language barrier, or expat kids might not be allowed to enrol in local schools by law.

However, Singapore's public schools are English-medium, maintain high standards, are closely monitored by the Ministry of Education (MOE), and are often much cheaper than private schools. Furthermore, they allow foreign students to attend (though they will have to get through the rigorous application procedure first). If expats plan to stay for a long time and the local syllabus isn't too unfamiliar, Singapore's public schools may be worth considering.

Children in Singapore usually start school at six years old. Primary schools run from Primary 1 to Primary 6, while high school runs from Secondary 1 to Secondary 5. This is followed by two or three years of post-secondary, pre-university education.

The Primary School Leaving Examination (PSLE) is held at the end of Primary 6. The results of the PSLE determine which secondary education stream the student will follow. There are three main streams, each of which has a slightly different structure.

Those in the "Express" stream take the GCE O-Levels in Secondary 4 before moving on to pre-university education.

Students in the "Normal (Technical)" and "Normal (Academic)" streams, on the other hand, take the GCE N-Levels in Secondary 4. Academic students who perform well in the N-Levels will have the opportunity to take the GCE O-Levels in Secondary 5, after which they too move on to pre-university education.

Meanwhile, technical students will typically leave secondary school at the end of Year to attend specialised institutes, where they earn a diploma after three years.

Academic and Express students go on to attend pre-university education for either two or three years. GCE A-Levels are taken in the final year of pre-university education.

## ADMISSION EXERCISE FOR INTERNATIONAL STUDENTS (AEIS)

Expat parents wishing to enrol a child in the public school system will have to liaise with the Ministry of Education. The process differs slightly depending on the age of the child.

Parents enrolling children in Primary 1 will need to undergo the Primary One Registration Exercise. The registration takes place at primary schools on allocated days between July and August each year. The date assigned depends on which "phase" of the process the child is eligible for.

There are three main phases. Singapore citizens go first, followed by foreign nationals with permanent residency status. Those without citizenship or permanent residency status are then allocated the remaining places. A list of the number of vacancies at each primary school is made available on the Ministry of Education's website before the registration exercise starts and is updated throughout the various process as places are allocated.

Expat children who are to be enrolled in Primary 2 to 5 or Secondary 1 to 3 will need to take the Admission Exercise for International Students (AEIS) in September or October of the year before enrolment. The AEIS tests proficiency in Maths and English.

Parents will need to apply on the Ministry of Education's website for their child to do the test. Once the test results have been finalised, the child will be offered a place in a school based on how well they've performed, what area they live in, and the availability of seats. The standards are quite high and expats should ensure their children are adequately prepared.

Expats who can't be in Singapore for the first test in September/October can take the Supplementary Admissions Exercise for International Students (S-AEIS). This usually takes place in February or March of the same year the child is due to be enrolled in school. This would, however, affect one's choices when it comes to choosing a school, as some of the more popular schools may already be full by this time of year.

Once the child has been registered, the school issues a Registration Acknowledgment Letter, which is then used to apply for a Student's Pass (STP) at the Department of Immigration. If the child already has a Dependant's Pass (DP) or Immigration Exemption Order (IEO), their parents won't need to apply for the STP.



# WHO YOU BECOME IS AS IMPORTANT AS WHAT YOU BECOME.



At Chatsworth International School, we are committed to creating a nurturing learning environment that cultivates not just academic success for our students, but develops their character beyond the classroom. Our small class sizes and focus on personal learning ensures students are given the individual attention they need to learn, grow and thrive in a rapidly changing world.

For more information, call our Admissions and book a campus tour now.

Chatsworth is adding a campus in Bukit Timah in August 2018. Enjoy a waiver of application fee and 25% off confirmation fee. Applications are now open. Terms and conditions apply.



🏠 Orchard Campus - 37 Emerald Hill Road Singapore 229313

✉ admissions.orchard@chatsworth.com.sg

☎ +65 6737 5955

🌐 chatsworth.com.sg



## PRIVATE AND INTERNATIONAL SCHOOLS IN SINGAPORE

Singapore has a large expat community, which means that there are many international and private schools. Local students can't attend these schools without special permission from the Ministry of Education, so they largely consist of international students.

Many of Singapore's international schools follow the International Baccalaureate (IB) curriculum, while others offer the curriculum of their country of origin. Some expats choose to enrol their kids in the latter simply because it means that the school holidays align with home-country holidays.

Another factor that greatly affects school choice is availability, as popular schools often have extensive waiting lists. Others might not have waiting lists at all and are a good option for enrolment while waiting for a spot to open up at a more prestigious institution. Although these intermediary schools are accepted as offering a good standard of education, the high turnover can unsettle students and disrupt the learning environment.

The Council for Private Education (CPE) oversees private and international schools in Singapore, and all institutions that admit international students have to register with the CPE and maintain certain standards when it comes to managers, teachers, premises and examination boards. Expat parents should be sure to double-check that their school of choice is certified before they apply.

## ADMISSION TO PRIVATE AND INTERNATIONAL SCHOOLS

For the most part, international schools accept applications throughout the year. Given that some of the more prestigious schools have waiting lists of up to four years for some grades, it's best to apply for admission as soon as possible.

Expat parents will need most – if not all – of the following documentation to apply for a place at an international school:

- At least two passport-sized photos of the child
- A copy of the child's birth certificate
- Copies of the passports of the child's parents
- School records (including official transcripts or report cards) for the last two or three years
- A copy of the child's Dependent Pass or Student's Pass (if applicable)
- A completed copy of the particular school's application form
- A copy of the child's immunisation certificate and any relevant doctor's reports

Note that some schools will request that fees be paid in advance, or will have non-refundable admissions and/or registration fees.

Unless they hold a Dependent's Pass or an Immigration Exemption Order, students moving to Singapore will need to apply for a Student's Pass in order to legally attend school there.





Tanglin Trust is the only school in Singapore that offers the choice of A Levels or the IB Diploma



- 100% pass rate in IB Diploma and A Levels
- IB Diploma average of 38.1 points
- Tanglin Trust students go on to study at the world's best universities
- Places currently available for entry to Senior School

Visit [www.tts.edu.sg](http://www.tts.edu.sg) to find out more.



Generations  
of Excellence

Tanglin Trust School  
95 Portsdown Road, Singapore 139299  
+65 6770 3480 [admissions@tts.edu.sg](mailto:admissions@tts.edu.sg)  
CPE Reg. No. 196100114C (7/6/2017 - 6/6/2023)



## TUITION AND FEES

The fees at public schools in Singapore are standardised by the Ministry of Education. Contrary to some accounts, international students don't need to make a donation to the national education fund every two years, but they do pay higher fees than local students.

The amount payable for public school fees depends on the student's residency status in Singapore and in some cases, their nationality. Fees are charged per month rather than per year.

Permanent residents pay a low price for schooling, with 2016/2017 pricing being 143 SGD a month for primary school, 220 SGD a month for secondary school and 307 SGD a month for pre-university.

Meanwhile, the 2016/2017 pricing for citizens of any of the member states of the Association of Southeast Asian Nations (ASEAN) is 403 SGD a month for primary school, 620 SGD a month for secondary school and 887 SGD a month for pre-university.

Those who are neither Singaporean permanent residents nor citizens of ASEAN countries pay the highest public school fees of the three groups. For the 2016/2017 year, the fees are 613 SGD a month for primary school, 970 SGD a month for secondary school and 1327 SGD a month for pre-university. Although these fees may appear to be expensive compared to other categories of fee payers, the cost is still well below the often-exorbitant pricing of international school fees.

The fees charged by private and international schools are usually payable annually, although sometimes the yearly charge can be split into two payments. They vary from institution to institution and will usually increase as the child progresses. For example, international kindergarten and primary school fees tend to start at around 15,000 SGD a year, while international secondary school fees are usually in the region of between 30,000 SGD to 35,000 SGD a year. Some schools charge higher fees for students whose parents don't hold passports from the school's country of origin – in this case, fees can be as high as 50,000 SGD a year.

Beyond this, it is also common for schools to charge fees for registration and the use of facilities. There are also fees for uniforms, bus services, canteen lunches, and in some cases, extra-curricular activities and school outings.

The good news is that some employers pay a portion of their employees' school fees. Expats moving to Singapore for work should try to negotiate for the inclusion of this perk as part of their relocation package.

## SCHOOL TERM AND SCHOOL DAY

School usually starts from between 7am and 8am (depending on the institution) and ends at around noon for kindergarten or between 2pm and 3pm for primary and high school students. Extra-curricular activities take place after school for about an hour or more.

Public schools in Singapore are split into two semesters of two terms each. For the 2017 academic year, the term dates for primary and secondary schools are:

- Term 1: Tuesday 3 January to Friday 10 March
- Term 2: Monday 20 March to Friday 26 May
- Term 3: Tuesday 27 June to Thursday 31 August
- Term 4: Monday 11 September to Friday 17 November

Private and international schools may follow the Singapore school dates or may align themselves with schools in their home countries. Most publish their term dates on their websites.

## HOMESCHOOLING

Perhaps surprisingly for a country that's so focused on education, Singapore's homeschooling community isn't as large or established as countries like the USA. With such a good, affordable public school system and numerous international schools to choose from, expats may want to investigate their education options thoroughly before choosing to homeschool their children.

Of course, there are benefits to homeschooling, especially if the family is set to only be in Singapore for a short time. This includes avoiding logistical issues like uniforms, excursions and application fees. For parents who choose this route, there are a handful of blogs, online homeschooling resources and homeschooling groups on social media that they might find useful.

Note that, by law, children in Singapore of a certain age must be enrolled in school. To homeschool children, it is necessary to apply to the Ministry of Education for an exemption from compulsory education.

## NURSERY SCHOOLS

Nurseries and kindergartens in Singapore provide three years of pre-school education for children aged three to six. These are run by various private institutions, including religious groups, business groups and some international schools. There are hundreds of pre-schools registered with the Ministry of Education, including more than 300 pre-schools run by the People's Action Party, the party that's governed Singapore since 1959.

The Singapore Pre-School Accreditation Framework (SPARK) is a quality-assurance framework run by the Early Childhood Development Agency (ECDA). So, when investigating a pre-school, parents should make sure that it's SPARK accredited.

The ECDA also oversees a number of excellence awards for kindergartens. Parents who are looking for an elite kindergarten should be on the lookout for these extra accolades.



## TERTIARY EDUCATION

The National University of Singapore (NUS), the Nanyang Technological University (NTU) and Singapore Management University (SMU) offer various tertiary courses. There's also a range of polytechnics which train middle-level professionals in specific workplace skills. Most have comprehensive course listings on their websites. To attend a higher learning institution in Singapore, students need to first apply at the institution and then apply for a Student's Pass at Singapore's Department of Immigration.

## TIPS FOR CHOOSING A SCHOOL FOR YOUR CHILD

Whether a seasoned expat who has had to sift through countless school choices or a first-time assignee that's never had to do much more than pack lunches, it's always a good idea to consider a few key principles when deciding about a child's education.

### THE EXPERIENTIAL ELEMENT

This is not typically the first thing on an expat parent's mind, but it is an important element that's worth serious consideration. Relocation can be challenging for young students and it isn't strange for parents to ask how moving might affect their children's lives. It is a normal anxiety that many expats deal with, and the best way for parents to address it is to think carefully about their child's preparedness for a new school context and their ability to enjoy, succeed and grow.

Anything radically different from a child's previous experience must be considered with great care. It is important for parents who plan on moving overseas to evaluate their children's needs and abilities and try to find a school that best aligns with their priorities. If a child has special needs, parents need to be certain that a prospective school can cater for them. Similarly, it is important for a school to offer courses or activities that develop and foster a child's interests and talents.

### CURRICULUM

Most expats tend to choose a curriculum that aligns with that of their home country, but it is also important to make sure that the curriculum is challenging enough for their children. This point is central to the decision-making process, especially for parents with kids in secondary school approaching the time when college applications begin.

Those with older kids should find out about the standardised test the curriculum is geared toward as well as which diploma is granted upon graduation. It is worth noting, for instance, that the International Baccalaureate curriculum is accepted in many countries.

Besides these fundamentals, it is also important to have a close look at the extra-curricular options a school offers. The best institutions will have a balanced blend of sports programmes, encourage their students to take part in community activities, and offer a range of cultural activities such as art, debating and music.

## TEACHERS AND CLASS SIZES

A school is only as good as its teachers, who are arguably the determining factor that influences a child's education and development. Though it can be difficult to find out how 'good' a teacher is, there are some basic questions that parents can ask to draw some general conclusions.

Find out about the qualifications the school requires its teachers to have and whether it encourages them to take part in professional development courses. Find out about the average teacher turnover and, above all else, find out about the average class size. Even the best teachers can become swallowed by a giant sea of eager students.

Lastly, visit the school and meet the teacher to find out how friendly, enthusiastic and knowledgeable they are about the school and its curriculum.

## PROXIMITY

It's essential for expat parents to consider how long travelling to and from school will take. The traffic congestion isn't as hard to handle as in destinations such as Bangkok. It's also relatively small and has good infrastructure so, for the most part, the journey to school shouldn't take as long as it can in a city-state like Dubai. But it still exists and long commutes with little ones in the back seat can be a frustrating experience.

Most expats find a good school close to where they work, and then find a home that's a reasonable distance from both of them. If they can't avoid living far away from their school of choice, it's important to make sure that the school provides student transport or that public transport is easily accessible. This shouldn't be too much of a problem – like so many other things in Singapore – the metro train lines are extensive, easy to use and safe.

## NURSERY SCHOOLS

Expat parents with children too young to start primary school will find plenty of options for nursery schools in Singapore, including Montessori pre-schools. Some popular nurseries cost almost as much as regular school and can have long waiting lists, so be sure to enquire early. Most schools allow you to choose how many days of the week your child will attend school, allow early drop-offs, provide lunches, or have optional afternoon programmes for working parents. Always check these specifics with individual schools.



### Rain Trees Kindergarten

**Address:** 60 Kheam Hock Road, Singapore 298824

**Website:** [www.raintreeskindergarten.com](http://www.raintreeskindergarten.com)

**Email:** [admin@raintreeskindergarten.com](mailto:admin@raintreeskindergarten.com)

**Telephone:** +65 6474 6181

**Gender:** Co-educational

**Age:** 2 to 6

**Curriculum:** International



#### Background

Rain Trees Kindergarten in Singapore is a small, family-orientated, independent school. The school caters to the international community.

Rain Trees provides a creative environment that's both stimulating and challenging. Children learn best through doing and the school gives ample opportunities to explore, experiment and discover with hands-on equipment and materials in an adult-directed setting.

Established in 1999, it is conveniently located on Kheam Hock Road near the Singapore Botanical Gardens. Rain Trees offers children and parents a spacious and secure integrated indoor/outdoor setting with a green and leafy garden.

### Rosemount International School

**Address:** 25 Ettrick Terrace, Siglap, Singapore 458588

**Website:** [www.ris.edu.sg](http://www.ris.edu.sg)

**Email:** [school@rosemount.com.sg](mailto:school@rosemount.com.sg)

**Telephone:** +65 6446 4636

**Gender:** Co-educational

**Age:** 2 to 7

**Curriculum:** International



#### Background

Rosemount International School specialises in early childhood development and is one of the most respected schools in Singapore for children aged between two to seven. It has an international inquiry-based curriculum aimed at developing well-rounded children from its three levels of preparatory school through to Grade 2. The school retains one of the lowest teacher-to-child ratios in Singapore with a dedicated and passionate team of teachers and teaching assistants. The school also offers after-school and holiday enrichment programmes, as well as a playgroup for parents and children to socialise with other families. The school's founder and managing director are highly qualified educational specialists. School hours are 9am to 12am in the nursery and 9am to 3pm in for full-day classes.

## INTERNATIONAL SCHOOLS

Singapore has plenty of international schools to choose from. Parents should contact schools directly to get the most up-to-date information, and to enquire about admission policies. In primary schools especially, space can be limited; so it's important to start the enrolment process as soon as possible.

### **Chatsworth International School**

*Addresses:* Orchard Campus: 37 Emerald Hill Road, Singapore 229313

East\* Campus: 25 Jalan Tembusu, Singapore 438234

\* The East campus caters to Primary students only.

*Website:* [www.chatsworth.com.sg](http://www.chatsworth.com.sg)

*Email:* [information@chatsworth.com.sg](mailto:information@chatsworth.com.sg)

*Telephone:* +65 6737 5955

*Gender:* Co-educational

*Teaching Language:* Language of instruction is English, with multiple other languages supported and taught throughout the school.

*Ages:* 3 to 18 years old

*Curriculum:* Chatsworth International School offers the International Baccalaureate (IB) Primary Years, Middle Years and Diploma Programmes.



### **Background**

Chatsworth International School is a diverse, internationally-minded school that caters to students from Kindergarten to Year 13 (Grade 12). Established in 1995, the Chatsworth mission to inspire, educate and enlighten forms the core pillars and education philosophy. The international school with two campuses is part of the larger and growing Chatsworth Group of Schools that also includes two locally registered Kindergartens.

With a population of more than 850 students, representing more than 50 nationalities, the school strives to provide community-based and yet holistic and balanced learning experience and prepares them for the 21st century workplace.

Chatsworth International School offers the International Baccalaureate (IB) Primary Years Programme, Middle Years Programme and IB Diploma Programme. The school is accredited by the Western Association of Schools and Colleges (WASC), is EduTrust certified and a member of the East Asia Regional Council of Schools (EARCOS).

### **Fees**

The tuition fees per semester for Academic Year 2017/18 are as follows:

Kindergarten (K1-K2): 12,505.09 SGD

Years 1 - 6: 14,345.82 SGD



Years 7 - 9: 14,639.58 SGD  
Years 10 - 11: 15,237.88 SGD  
Years 12 - 13: 16,871.09 SGD

The ESL fee per semester, where required, is 1,520 SGD. There are two semesters in each academic school year. Fees stated are inclusive of prevailing Singapore Goods and Services Tax.

A non-refundable application fee of 230 SGD is payable upon submission of application. A confirmation fee of 2,300 SGD is payable as it is a non-refundable administrative fee and the full amount applies regardless of enrolment date. Fees stated are inclusive of prevailing Singapore Goods and Services Tax.

Fees are payable in advance of each semester. There are two semesters in each academic school year.

#### ***From the school***

"Our small class sizes allow students to be heard and express themselves, gain confidence, think critically and globally and be recognised for their individual talents while at the same time maintaining our overall importance of community.

We are expanding to a bigger campus at Bukit Timah in August 2018 to better serve the needs of our student population. Chatsworth is truly a wonderful school and the best way to see this is to visit us in action. We welcome you to schedule time to come and experience for yourself Chatsworth's enthusiastic community spirit".

- *Head of Schools and Principal of Chatsworth Orchard, Tyler Sherwood*

#### ***From the parents***

"Both our children are attending Chatsworth Orchard campus. The deciding factor that made us choose Chatsworth was seeing how happy and polite the students were during the school tour. The school has an open door policy; as a parent, I find the teachers very approachable. The amount of support that I've seen teachers giving to each individual student is also amazing. In all, Chatsworth has been a really positive experience for us".

- *Nathiya and Glenn Porritt*

### **Canadian International School**

Address: Lakeside Campus: 7 Jurong West Street 41, Singapore 649414

Tanjong Katong Campus: 371 Tanjong Katong Road, Singapore 437128

Website: [www.cis.edu.sg](http://www.cis.edu.sg)

Email: [admissions@cis.edu.sg](mailto:admissions@cis.edu.sg)

Telephone: +65 6467 1732

Gender: Co-educational

Curriculum: Canadian, International Baccalaureate (IB)

Ages: 2 to 18



### ***Background***

Having opened in 1990 as the Canadian Preparatory College with just six students, CIS has grown to accommodate over 3,000 students from kindergarten to Grade 12 in two campuses, both with their own unique feel and character. The Lakeside campus has state-of-the-art facilities, including sport-specific courts and fields, a double-storey library, a Performing and Fine Arts Centre and a fully equipped auditorium. Part of Tanjong campus is listed as a Singapore Heritage Site, yet facilities are cutting edge and modern. As a whole, the school has a diverse student body representing over 70 nationalities. The school has two campuses – Lakeside in the west, the original school, is from Early Years to Grade 12, while Tanjong Katong in the East Coast district is from Early Years to Grade 6.

### ***What the school says***

“The Canadian International School offers students an opportunity to develop through a diverse and challenging curriculum and a wide range of activities. Students are given ownership of the learning process and are encouraged to actively participate in their own education by setting personal goals and practising on-going self-evaluation. Our inquiry-based programmes and activities encourage students to discover their interests and strengths. All of this is done in a safe, caring and supportive school environment that fosters positive attitudes and allows students to challenge themselves and be risk-takers, without the fear of being judged.”

### ***Curriculum***

The school follows the International Baccalaureate Primary Years Programme (PYP) and Middle Years Programme (MYP). Seniors can study toward the Ontario Secondary School Diploma or the IB Diploma, both of which are world recognised.

### ***Fees***

Fees for the 2017/18 year range from 30,510 SGD a year for Pre-Kindergarten school up to 38,710 SGD a year in Grade 12. Fees are payable before the start of each of the two school semesters in equal instalments. There is also an additional application fee of 2,500 SGD and a confirmation fee of 3,500 SGD.

### ***Location***

The Lakeside campus is in Jurong West Street in western Singapore. Tanjong Katong campus is in the East Coast district, 10 minutes from the city centre and easily accessible from East Coast expat areas.

### ***From the head teacher***

“CIS provides a vibrant learning community and a caring and supportive home to over 3,000 students across two campuses. Our passionate, dedicated and highly trained staff challenges each of our students to reach his or her individual potential. On behalf of the Canadian International

School community, I invite you to come and explore our school. We welcome the opportunity to share with you the delight that comes in joining the caring and committed learning community that is CIS.”

*Glenn Odland, Head of School*

### **EtonHouse International School**

**Address:** 51 Broadrick Road, Singapore 439501

**Website:** [www.etonhouse.com.sg](http://www.etonhouse.com.sg)

**Email:** [broadrick@etonhouse.com.sg](mailto:broadrick@etonhouse.com.sg)

**Telephone:** +65 6346 6922

**Gender:** Co-educational

**Teaching language:** Mandarin, English, Hindi and/or Japanese

**Curriculum:** IB PYP and IGCSE

**Ages:** 3 to 13



### **Background**

EtonHouse educational group is a leading international school group in Asia. The campus on Broadrick Road houses both EtonHouse International School and EtonHouse Pre-school, which were jointly awarded IB World School status in 2007. The Broadrick Road School is small but diverse, with around 500 pupils who represent 48 nationalities. The rich curricular and co-curricular programme includes daily language classes in Mandarin, Hindi, Japanese and Second Language English. Facilities include computer laboratories, a cafeteria, a library, specialist art and music rooms, a large multi-purpose hall and a multi-purpose covered games court.

### **What the school says**

“EtonHouse is headquartered in Singapore with 100 pre-schools and schools spread across Singapore, China, India, Indonesia, Korea, Japan, Malaysia, Cambodia, Vietnam, Hong Kong, Myanmar and Middle East today. Together these schools provide high quality international education to over 10,000 children across 61 different nationalities. EtonHouse International Schools and Pre-schools are places where children are encouraged to become critical thinkers and lifelong learners through an international, inquiry-based programme. We provide stimulating learning experiences focused on the strengths and needs of individuals. This encourages each child to reach their full potential – academically, socially, emotionally and physically.”

### **Curriculum**

At pre-school level, EtonHouse follows an Inquire-Think-Learn curriculum inspired by the Reggio Emilia Project of Northern Italy, combined with the International Baccalaureate Primary Years Programme (IB PYP). Years 2 through 6 follow the IB curriculum combined with the Literacy and Numeracy strategies of the National Curriculum for England. The school also offers a bilingual programme, where an English and a Mandarin teacher are in the classroom at all times.



### *Fees*

Fees for the 2017/2018 year range from SGD 23,112 for the half-day nursery school programme up to 28,826 SGD a year in Year 9. The fees are payable in two instalments at the start of each semester. There is also a non-refundable application fee of SGD 2,140 and additional fees for canteen lunches and ESL classes.

### *From the founder*

"EtonHouse is committed to the pursuit of excellence and leadership in education services and practice. The curriculum is based upon leading pedagogical models from around the world and designed to develop students academically, emotionally, socially, aesthetically and physically. All learning at EtonHouse is built upon proven research-based best practice."

*Ng Gim Choo, Founder*

### **GEMS World Academy (Singapore)**

**Address:** 2 Yishun Street 42, Singapore 768039

**Website:** [www.gwa.edu.sg](http://www.gwa.edu.sg)

**Email:** [info@gwa.edu.sg](mailto:info@gwa.edu.sg)

**Telephone:** +65 6808 7300

**Gender:** Co-educational

**Language:** English

**Ages:** 3-18 (Pre-K to Grade 12)

**Curriculum:** IB/IGCSE



### *Background*

GEMS World Academy (Singapore) provides outstanding learning opportunities to the international student community, strengthened by nearly 60 years' experience from our global network of leading GEMS Education Schools.

Our students, representing more than 60 nationalities, are taught in an environment of mutual respect, transparency and engagement. Our international syllabus provides a balanced education across Academic, Arts and Sports.

To complement our world-class facilities, the inspiring teachers at GEMS Singapore utilise their international teaching experience to enhance our Pre-K to Grade 12 programmes.

We offer the three International Baccalaureate Programmes (Primary Years, Middle Years and Diploma Programmes), enhanced further for Grade 9 and 10 students with the Cambridge International Examinations IGCSE, delivered by passionate, internationally experienced educators and specialists.

GEMS Singapore is part of GEMS Education, an international company with schools and education services in 14 countries. As an international school group, we educate over 250,000 students from 151 countries and employ 20,000 education professionals, specialists and staff from over 80 countries. We share a mission – to provide a quality education to everyone.

### *Fees*

Below are the fees for the 2017 school year:

- Pre-K: 12,600 SGD
- K1 Half Day: 12,600 SGD
- K1 Full Day: 26,040 SGD
- K2 Full Day: 31,920 SGD
- Grade 1: 31,920 SGD
- Grade 2 to 5: 32,760 SGD
- Grade 6 to 10: 37,800 SGD
- Grade 11 to 12: 39,113 SGD

All fees are inclusive of 7% GST and updated as of March 2017. Tuition fees exclude transportation, uniforms and optional extra-curricular activities fees. Fees for less than one semester will be pro-rata on a monthly basis.

The registration fee is 1,500 SGD (non-refundable), is payable in full upon submission of your application, in order for it to be processed.

The admission fee will become due upon acceptance of our placement offer. GEMS World Academy (Singapore) will charge a one-time, non-refundable fee of 4,000 SGD, payable in advance, to secure a place for your child.

As an International School in Singapore, we offer attractive sibling discounts for families with multiple children. Please contact us for more information.

### *From the Head of School*

"It is my pleasure to welcome you to GEMS World Academy (Singapore).

After working in education for nearly 30 years and across four continents, it is my extreme privilege to be leading this exceptional international school.

A dedicated team of teachers and support staff are highly motivated on the mission of the school. That is, a commitment to providing outstanding learning opportunities, through an environment of mutual respect, transparency and engagement.

To achieve this mission it is the responsibility of all our teachers to ensure that students at GEMS Singapore receive the individualised attention necessary so that each child can achieve their best. The teachers at this school are all highly qualified professionals who are expected to lead by example and embrace the responsibility of guiding the development of children and young adults. It is my belief that an effective partnership between teachers, students and parents is what makes a successful educational experience.

Parents are supported at our school through participation in the parent association as well as the parent engagement programme. This includes workshops and seminars for parents on topics related to the well-being and development of children.

I encourage all parents to be active members of our GEMS Singapore community and converse regularly with teachers and school leaders regarding the development of their children.

GEMS World Academy (Singapore) is part of the larger network of GEMS Education. The GEMS network extends across 13 countries and reaches more than 250 000 students.

Built by the son of two teachers, GEMS Education has grown into one of the most highly respected and successful education groups in the world by focusing on exceptional educators.

At a GEMS school children learn to develop every facet of themselves, so they can shine in any part of the world. Our four core values are Global Citizenship, Pursuing Excellence, Growing by Learning and Leading Through Innovation.

Our school is fully authorised to implement the high-quality programmes of the International Baccalaureate (IB). The Primary Years Programme (PYP) and Middle Years Programme (MYP) are focused on student-led enquiry-based learning which provides children with not only the academic foundations but also the skill set required to be effective and adaptable in any facet of their future life.

In addition to the MYP, middle school students complete the Cambridge International General Certificate of Secondary Education (IGCSE). This is the world's most popular international qualification for 14- to 16-year-olds.

The senior students undertake the IB Diploma Programme (DP) which is a highly regarded qualification recognised and accepted by many of the top universities around the world. In addition, international benchmark testing provides data for improvement of academic performance.

The world-class facilities at GEMS World Academy (Singapore) provide a rich environment for stimulating young minds. Approaches to teaching and learning are enhanced by the exceptional sports, arts and technology resources.



A centre for innovation and entrepreneurship provides an amazing opportunity for students at GEMS Singapore to be at the cutting edge of technological developments as they happen.

I am proud to be a member of this school community and am confident that the educational experience at GEMS Singapore caters for all dimensions of a child's intellectual, social and physical well-being while also fostering their individual talents.

This internationally minded environment provides each student with the opportunity to excel and make significant and valued contributions to their local community and the wider world in their days ahead."

*Richard Henry, Head of School*

### **Quotes from parents**

"We are very pleased with the education our boys are getting at GWA. The teachers and staff are top notch and the facilities can't be beat. Best decision we made when moving to Singapore in 2014!"  
*Cyndi Mitchell*

"What I value the most about the school is its diversity, the commitment and dedication of its teachers and the wonderful way the school supports students in their journey to be thinking, mindful, well-rounded individuals."  
*Meera George*

"Top notch!! Our kids just started in GWA and our family couldn't be happier. We highly recommend GEMS World Academy!!"  
*Claudia Powell*

### **German European School Singapore**

**Address:** Main Campus, 72 Bukit Tinggi Road, 289760  
Junior School Campus, 300 Jalan Jurong Kechil, 598668

**Website:** [www.gess.sg](http://www.gess.sg)

**Email:** [info@gess.sg](mailto:info@gess.sg)

**Telephone:** +65 6469 1131

**Gender:** Co-educational

**Teaching language:** English, German

**Ages:** 18 months to 18 years



### **Background**

Founded in 1971, the German European School Singapore (GESS) has evolved from being a modest German school teaching six pupils to becoming a centre of learning for students from countries around the world. GESS is now one institution consisting of two sections. The German section of GESS offers all major German school leaving certificates, while the English-medium European section offers International Baccalaureate programs from pre-primary to high school level.

### **What the school says**

"The German European School Singapore is a multilingual not-for-profit international school in Singapore with a distinct European flavour. At our two green campus locations GESS provides international education to 1,500 students of more than 50 nationalities from Pre-School to Grade 12.

As an accredited 'Excellent German School Abroad', GESS is a private school association led by an elected committee and the school management, guided by the mission to give students roots and wings."

### **Curriculum**

Students at GESS have access to the International Baccalaureate (IB) curriculum as well as all German school leaving certificates, depending on the language they prefer. There is an emphasis on individual attention, holistic education and mother tongue education, with language support available to Dutch and Danish speaking students.

### **Fees**

There is an entrance fee of 2,945 SGD and a development fee of 4,890 SGD per student. Standard annual fees range between 18,240 SGD for the German section primary school and 34,180 SGD for the final year of an IB diploma earned in conjunction with Pamoja Education. Fees are payable bi-annually.

### **Location**

The two campuses are situated at either side of the Bukit Timah Nature Reserve, an ASEAN Heritage Park which conserves some of Singapore's indigenous tropical forest. Close to the island's geographical centre and only 7.5 miles (12km) away from the city's commercial downtown area, both the junior and senior campuses of GESS are ideally located to serve the needs of students as well as those of their parents.

### **From the head teacher**

"We place a great deal of emphasis on individualised support. That is why our classes are small, providing opportunities for differentiation in lessons which are aimed at allowing each of our students to fulfil their personal potential. Dedicated teachers and modern equipment in our classrooms ensure that this can be put into practice in every class.

Apart from academic excellence, the numerous and varied opportunities to engage in creative or sporting activities as well as taking on social responsibility in community projects play an important part in our holistic education.

The quality of our service is continually assessed both by the German Education authorities and the IB. One particularly pleasing result of our work was our accreditation as an 'Excellent German School Abroad' following a German federal school inspection in January 2009. GESS was one of the first schools worldwide to achieve this"

*Hermann Battenberg, Principal*

### ***What the parents say***

"GESS has a joyous approach to learning and a good balance between work and play. In addition, it's a small school and, despite having grown, it's still small enough for the teachers to know all the students. The school feels like an extended family and I think my two boys have felt very welcome and at home since their first day. I really like that classes open up for students to showcase their annual project to parents and there is always so much enthusiasm on their faces. You can tell that the children feel appreciated for their efforts and this enhances their sense of responsibility and self-esteem"

*Elisa Bonzi and Antonio Bertoletti with Matteo (13) and Luca (6)*

### **Integrated International School**

Address: 41 Sunset Way, #01-01 Clementi Arcade,  
Singapore 597071

Website: [www.iis.com.sg](http://www.iis.com.sg)

Email: [admissions@iis.com.sg](mailto:admissions@iis.com.sg)

Telephone: +65 6466 4475

Gender: Co-educational

Curriculum: Australian



### ***Background***

The first boutique International School in Singapore to offer a Mainstream and Support approach for children aged four to 16 years old in an inclusive setting. IIS prides itself on inclusivity and acknowledges that the "one size fits all approach" to learning and teaching is extinct. Students at IIS are integrated in one international community, supporting and enhancing individual talents while fostering socially conscientious and tolerant human beings.

### ***What the school says***

"Amongst the jungle of International Schools in Singapore, class sizes rarely fall below 18. IIS provides an environment where small class sizes (approximately 10 students per class) and an



enviable teacher to student ratio are tantamount to the success of the students. Encouraging students to 'think outside of the box', believe in themselves, take risks and enjoy every small success they are a part of is as important as academic success at IIS."

### **Curriculum**

The school adopts two approaches: a Mainstream and a Support approach for those with learning differences or unique needs. Both are based on the foundations of the New South Wales curriculum with students sitting the NAPLAN assessments in the relevant year groups as advised by the NSW BOSTES (New South Wales Board of Studies, Teaching & Educational Standards).

### **Fees**

Fees for the 2017 academic year are 28,000 SGD for Mainstream schooling and 34,000 SGD a year for the Support Approach programme. The fees are payable in two instalments. There is also a 2,600 SGD admission fee.

### **Location**

The school is located on Sunset Way, in Clementi Arcade.

### **From the Principal**

"In Singapore, academic excellence is part of everyday culture and heavily emphasised in school systems. Not every student fits the 'cookie-cutter' definition of academic excellence and therefore may miss out on a variety of opportunities because their mind learns and processes information differently. Education can no longer take a 'one size fits all' approach, which is why we offer our students differentiated learning. In addition, and equally important to our academic standards are our students' well-being, which is achieved by adopting a collaborative teaching approach and scaffolding lessons according to each individual child's learning style. Our students' feelings matter and are at the heart of our programme."

*Dr Vanessa von Auer, Principal and Founder*

### **ISS International School**

Address: Elementary and Middle School: 25 Paterson Road, 2385

High school: 21 Preston Road, Singapore 109355

Website: [www.iss.edu.sg](http://www.iss.edu.sg)

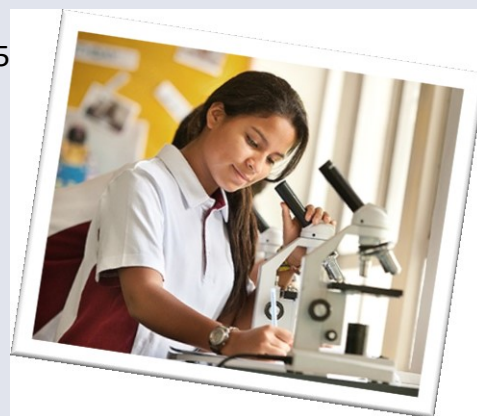
Email: [admissions@iss.edu.sg](mailto:admissions@iss.edu.sg)

Telephone: +65 6235 5844

Gender: Co-educational

Curriculum: IB

Ages: 4 to 18



### **Background**

This IB World School in central Singapore represents over 50 different nationalities in a student body of about 800 students, spread across two campuses. The school is committed to providing a holistic, multi-cultural learning environment which values the unique contribution of individual students. ISS is the only school in Singapore to completely specialise in and follow the entire IB curriculum from the Early Years to the senior level, and also offers a comprehensive English as a Second Language programme. ISS emphasises all-round development; its extra-curricular programme includes a strong community service component and a wide range of activities from kung fu to scuba diving, as well as several performing music groups.

### **What the school says**

“Our mission is to provide a multicultural educational environment for our students in which they achieve academic success, personal growth and become socially responsible and active global citizens with an appreciation of learning as a life-long process. We accomplish this through an international and dynamic curriculum delivered by an enthusiastic and experienced faculty and staff in partnership with students, parents and guardians, in a caring and supportive community.”

### **Curriculum**

The school follows the International Baccalaureate curriculum including the Primary Years Programme, Middle Years Programme and the IB Diploma Programme. The IB curriculum aims to develop internationally-minded students.

### **Fees**

Fees for the 2017/2018 year range from 25,038 SGD a year in Kindergarten up to 35,524 SGD in Grade 12. Fees are payable in two instalments before the start of each of the two semesters. There is also a development fee of 1,230.50 SGD per semester and a once-off enrolment fee of 3,600 SGD.

### **Location**

The Elementary School and Middle School campus is in Paterson Road, while the High School campus is in Preston Road (off Depot Road), right next to Mount Faber Park.

### **From the head of school**

“For thirty years, ISS has been developing future global leaders through a sound, vigorous and challenging education. ISS is truly a unique school, with students from over 50 different countries, and no single dominant group. As a result, our students feel comfortable in being who they are, and in being proud representatives of their respective cultures.”

*Margaret Alvarez, Head of School*

### **Lycée Français de Singapour**

**Address:** 3000 Ang Mo Kio Avenue 3, 569928

**Website:** [www.lfs.edu.sg/en](http://www.lfs.edu.sg/en)

**Email:** [administration@lfs.edu.sg](mailto:administration@lfs.edu.sg)

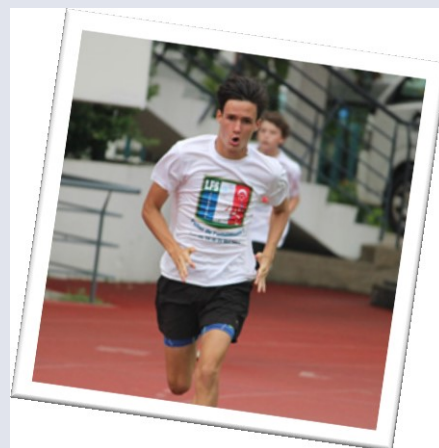
**Telephone:** +65 6488 1 160/161

**Gender:** Co-educational

**Teaching language:** French and English

**Curriculum:** French

**Ages:** 4 to 18



### **Background**

From humble beginnings in 1967, the Lycée Français de Singapour (French School of Singapore) has gone from strength to strength. A number of donations from French companies enabled the school to move to a large, modern campus in Ang Mo Kio in the 1990s. The school now has a second campus in Serangoon for Kindergarten and Primary school, and hosts more than 2,400 students. The school is supervised by the French Foreign Ministry and follows two streams –

French with English as a second language, and a French and English bilingual programme. Sports facilities are good and there is a range of extra-curricular sports and cultural activities on offer.

### **What the school says**

“The French School of Singapore belongs to a dynamic network of French educational establishments in foreign countries, supported by AEF (Agency for French Education abroad). LFS complies with Singaporean law and is recognised by the French Ministry of Education. Beyond the demands of academic achievement, the French school favours the self-fulfilment of its students through a broad range of extra-curricular activities such as sports, technology and culture, organised on its 22,000 square metre campus. Equipped with modern facilities, the school offers its students the best assets for building their futures.”

### **Curriculum**

The school follows the French national curriculum, either in French, or in bilingual classes (English and French).

### **Fees**

Fees for the 2017/2018 year range from 16,500 SGD a year for European Union students in kindergarten up to 29,500 SGD a year for non-EU students in Grade 12. There is also a first-time registration fee of 5,350 SGD. Fees are paid in instalments before the start of each term. Extra-curricular activities cost extra.



**Location**

The school is in central Singapore in Ang Mo Kio, a short drive from popular expat areas on the East Coast.

**Nexus International School Singapore**

**Address:** 201 Ulu Pandan Road, Singapore 596468

**Website:** [www.nexus.edu.sg](http://www.nexus.edu.sg)

**Email:** [enquiry@nexus.edu.sg](mailto:enquiry@nexus.edu.sg)

**Telephone:** +65 6536 6566

**Gender:** Co-educational

**Curriculum:** British, IB

**Ages:** 3 to 18

**Background**

Nexus International School Singapore (NISS) is part of the Taylor Education Group, one of the largest and best-known education providers in Malaysia. The school offers a truly international educational experience, encouraging community involvement and multiculturalism. It has modern, state-of-the-art facilities including a cafeteria that caters to international tastes, a state-of-the-art auditorium and fully equipped science, computer and multimedia laboratories. The school has an open-door policy that encourages parent participation and two-way communication. Its atmosphere of multicultural respect is enhanced by excellent co-curricular programmes and field trips throughout the year, as well as the school's international student exchange programme.

**What the school says**

"Yesterday we might have talked about creating 'global citizens of tomorrow.' Today we would do well to recognise that our learners are already world citizens.

In a more connected, more social world, where students have more choice and greater access to information, schools have had to become more flexible and adaptive in order to meet the increasingly diverse needs of modern learners. The shift is toward a more personalised approach to learning.

We strive to create in our school an inviting environment, in which human respect and values are balanced against academic rigour, and where learners are encouraged to realize their potential and to respect their own unique worth as well as that of others.

Nexus International School has a team of highly qualified international educators, delivering well-balanced curricula based on the best standards and practices used around the world.

We are an authorised International Baccalaureate (IB) World School for the Primary Years Programme (PYP) and the Diploma Programme (DP). We are also a member of the Council of International Schools (CIS), and an approved Cambridge International Examinations (CIE) Centre."

### **Curriculum**

NISS is an authorised International Baccalaureate (IB) World School for Primary Years Programme (PYP) and Diploma Programme (DP). The framework for the Grade 6, 7, and 8 programme is the Cambridge Lower Secondary Programme (CLSP). The Grade 9 and 10 programme follows the University of Cambridge curriculum leading to the Cambridge IGCSE examinations. Year 12 and 13 learners prepare for the exams at the end of the IB Diploma Programme.

### **Fees**

Fees for the 2017/2018 year range from 21,030 SGD a year for a half-day Nursery programme up to 37,460 SGD a year in Grade 12. The fees are payable before the start of each of the two school semesters in equal instalments. There is also an application fee of 856 SGD, a registration fee of 2,354 SGD and a returning student fee of 3,210 SGD a year.

### **Location**

The school is in central Singapore on Ulu Pandan Road, and is easily accessible from most areas.

### **From the head teacher**

"Our purpose is to educate the youth of the world to take their productive place as leaders in the global community by offering our pupils a comprehensive education from Nursery to Year 13. We are a caring community where students' needs are a priority and where traditional Singaporean and modern Western educational values are respected and encouraged to coexist. Nexus offers university preparatory programmes aiming to provide a challenging academic environment emphasising learning, as well as social and personal growth."

*Dr Stuart Martin, Principal*

### **One World International School (OWIS)**

Address: 696 Upper Changi Road East, Singapore 486826

Website: [www.owis.org](http://www.owis.org)

Email: [info@owis.org](mailto:info@owis.org)

Telephone: +65 6542 2285

Gender: Co-educational

Curriculum: British, IB

Ages: 3 to 15



### **Background**

Situated on Singapore's East Coast, OWIS is a non-denominational, multi-cultural school that provides its students with a truly international education. The curriculum follows the IB Primary Years programme followed by a modified UK curriculum towards the IGCSE. Students are given individual attention within a multi-cultural setting, and the school aims to mould students into caring, confident individuals with an international mindset and respect for other cultures. Currently, the school has classes for kindergarten to Grade 10, but is expanding upwards year by year with a view to eventually offer the IGCSE and A-levels in the senior school. Facilities are modern and include specialised classrooms for science and art, a multi-purpose auditorium, a well-stocked library, a tennis court, badminton and basketball courts, a large soccer field and excellent swimming facilities.

### **What the school says**

“One World International School (OWIS) offers high quality education in a nurturing, multi-cultural environment. With small class sizes and high teacher-student ratios, we offer a personalised education and individual attention for children of all nationalities, from Early Childhood to Grade 10. Situated in the East Coast area of Singapore, our school is in spacious and green surroundings with a warm community atmosphere where every member of our school is valued.”

### **Curriculum**

The school offers the International Baccalaureate Primary Years Programme (PYP) and Middle Years Programme (MYP), with a view to eventually offer IGCSE and IB Diploma as the school expands.

### **Fees**

Fees for 2017/2018 range from 16,419 SGD a year for three days a week of the Early Childhood programme, to \$29,458 SGD for in Grades 6 to 10. There is an application fee of 150 SGD as well as a registration fee of 2,400 SGD for new students.

### **Location**

The school is on Upper Changi Road East, a short drive from popular expat areas on Singapore's East Coast.

### **From the head teacher**

“School days are some of the most important days in one’s life- shaping the sort of people we are, and providing the backdrop for lifelong learning. At OWIS we aim to offer a rich, enjoyable and lasting educational experience for students of all nationalities from two to 14 years old. With an emphasis on providing a sound structured curriculum and an experiential and inquiry approach to learning, our students grow to be confident articulate learners who are knowledgeable as well as caring, internationally minded individuals.”

*Gregor Polsen, Head of School*

**Singapore American School**

Address: 40 Woodlands St 41, Singapore 738547

Website: [www.sas.edu.sg](http://www.sas.edu.sg)

Email: [sasinfo@sas.edu.sg](mailto:sasinfo@sas.edu.sg)

Telephone: +65 6363 3403

Gender: Co-educational

Curriculum: American

Ages: 3 to 18

**Background**

The Singapore American School (SAS) was established by expat parents in 1956 to meet the needs of the growing expat community. Today the school is an excellent non-profit American-curriculum school from pre-Kindergarten up to Grade 12. The 36-acre campus makes SAS one of the largest single-campus international schools in the world, with almost 4,000 students from 50 countries, although the majority are American. Despite its large student body, the school retains an excellent teacher-to-student ratio of no more than 22 students per teacher. It's renowned for its excellent academic, sporting and cultural achievements, and students consistently out-perform their peers in the US education system. The school has a good choice of extra-curricular activities on offer, although it is particularly known for its established dance programme.

**What the school says**

"SAS is located on a 36-acre campus in the Woodlands area of Singapore, approximately 35 minutes' drive from downtown Singapore. The campus is purpose built, supports classroom spaces for music, art, and drama, and includes state-of-the-art facilities for students at all grade levels. Students enjoy classrooms that are both modern and spacious, while open airy walkways, flowing fountains and tropical courtyards are located throughout the campus. SAS provides a safe and pleasant learning environment in one of the finest international school facilities in the world."

**Curriculum**

Singapore American School is fully accredited by the Western Association of Schools and Colleges (WASC) in the US and offers the American High School Diploma at the senior level.

**Fees**

Fees for new students in the 2017/2018 year range from 37,370 SGD a year for pre-kindergarten up to 51,748 SGD a year in Grade 12. The fees are payable before the start of each of the three school terms in unequal instalments. Fees for new students include a non-refundable registration fee of 7,490 SGD for holders of US passports or Green Cards, or 9,630 SGD for those who do not hold a US passport or Green Card.



**Location**

The school is located in the Woodlands area, about 35 minutes from the city centre.

**From the head teacher**

"As parents, selecting a school for your child is one of the most important decisions you will make. Each fall at SAS, we open our doors to over 3,900 students and their families, and we are deeply committed to ensuring that every day, each and every student receives the extraordinary care that is the hallmark of Singapore American School.

At SAS, it is our mission to provide each student an exemplary American educational experience with an international perspective. Students who attend SAS compete successfully with the best students in the world. In addition, they exhibit strong character, leadership, and resiliency, and show compassion for others. We are committed to ensuring that SAS students not only get a great education, but that their experience with us will change their life!"

—Dr Chip Kimball, Superintendent

**Stamford American International School**

Address: 1 Woodleigh Lane, Singapore 357984

Website: [www.sais.edu.sg](http://www.sais.edu.sg)

Email: [admissions@sais.edu.sg](mailto:admissions@sais.edu.sg)

Telephone: +65 6602 7247

Gender: Co-educational

Curriculum: American

Ages: 2 to 18

**Background**

SAIS is part of Cognita, a leading educational group with headquarters in the UK and regional headquarters in Singapore. Located in central Singapore, the school is a quick drive from most expat areas and is easily accessible on public transport. The school has 2,500 pupils from 50 different countries, about half of whom come from North America. Facilities at SAIS are excellent and include state-of-the-art, Wi-Fi enabled classrooms, a fully equipped auditorium, a gym, swimming pool, a library and resource centre, art and music rooms, sport-specific indoor courts, an Astroturf field and a theatre.

**What the school says**

"Stamford American International School was opened by Cognita in August 2009 and is a world class school for children of two years of age and older. Stamford employs a holistic approach to educating children through a combination of American and International curricula. Stamford aims to not only develop students intellectually but also to cultivate the social, emotional, and physical components of every student. Stamford students acquire the academic skills necessary to flourish

in school and at the same time, advance a deep, personal appreciation of other cultures, emphasized by daily Mandarin and Spanish classes. Our school's Foundation Campus is centrally located on Lorong Chuan and features purpose-built facilities including spacious classrooms, an American football field, soccer field, basketball court and a swimming pool."

### **Curriculum**

Stamford is accredited by American educational bodies and offers the American High School diploma. It is also a candidate school for the International Baccalaureate Primary Years (PYP) and Middle Years Programmes (MYP) and integrates these programmes with American standards.

### **Fees**

Fees for the 2017/2018 year range from 15,402 SGD a year for half-days in Nursery school up to 40,206 SGD a year in Grade 12. The fees are payable before the start of each of the two school semesters in equal instalments. There is also an application fee of SGD 3,160 and an annual technology fee of up to 1,070 SGD depending on the grade.

### **Location**

The school is located in central Singapore, an easy 10- to 15-minute drive from the most popular expat areas.

### **From the head teacher**

"Stamford is an extraordinary school, made so by its focus on educational excellence and its warmth and integrity. Stamford is built on a strong sense of community, a commitment to realizing the potential of each student, and providing a balanced education that addresses the academic, social, emotional and physical aspects of our students' lives."

*Malcolm Kay, Superintendent*

### **Tanglin Trust School**

Address: 95 Portsdown Road, Singapore 139299

Website: [www.tts.edu.sg](http://www.tts.edu.sg)

Email: [admissions@tts.edu.sg](mailto:admissions@tts.edu.sg)

Telephone: +65 6778 0771

Gender: Co-educational

Curriculum: British, IB

Teaching language: English

Age: 3 to 18 (Nursery School to Year 13)



### **Background**

With 90 years of experience in delivering high quality education, Tanglin Trust School in Singapore offers the best of British based learning in an international context. It caters for expatriates in Singapore from a wide range of backgrounds and cultures who benefit from world-class facilities combined with the highest possible standards of teaching. Tanglin Trust is also a registered charity, and all fees and charges are used to run and improve the school.

The school has three internal sections; the Infant School (3 to 7 years), the Junior School (7 to 11 years) and the Senior School (11 to 18 years). Students take I/GCSEs at 14 years with both A Level and International Baccalaureate Diploma pathways available at 16 years old. A globally recognised, prestigious international school, Tanglin students go on to some of the best universities in the world.

### **What the school says**

At Tanglin we strive to make every individual feel valued, happy and successful. Responsibility, enthusiasm and participation are actively encouraged and integrity is prized. Working together in a safe, caring yet stimulating environment, we set high expectations whilst offering strong support, resulting in a community of lifelong learners who can contribute with confidence to our world.

### **What the inspectors say**

“This school provides an outstanding quality of education for its pupils, which combines the best of British educational standards and methodology with an awareness of the local cultural and regional context. The curriculum is outstanding in all respects. It provides exceptional breadth and balance, which enables pupils to excel academically and personally.”

*Senior School BSO inspection, February 2013*

### **Curriculum**

Tanglin Trust School offers British based learning in an international context for 3- to 18-year-olds. The English National Curriculum forms the basis of study and this is contextualised to the school's setting in South East Asia. Following I/GCSEs, students have the opportunity to choose either A Levels or the International Baccalaureate Diploma at Sixth Form.

### **Fees**

There is an application fee of 2,675 SGD for all students and a one-off, non-refundable, Capital Levy of 3,500 SGD. Regular fees are payable termly and range from 8,727 SGD a term for nursery school and 14,487 SGD for Years 12 and 13 for the 2017/2018 school year.

### **Location**

Located on Portsdown Road, Tanglin Trust School is approximately 15 minutes' drive from the west of the city centre, in Singapore's 'one-north' area, set amongst the heritage and nature areas of Rochester Park, the Wessex Estate and Nepal Hill.

### *From the Chief Executive Officer*

"Tanglin is a vibrant coeducational day school where children learn to be successful and happy in their lives. In developing the whole child, we set high expectations for achievement in the academic and the arts, whilst also nurturing their life skills. Our students enjoy being at school, they look forward to the challenge, the opportunities, the comradeship, the satisfaction and the fun that is part of Tanglin everyday daily life. It is important to us that they have a clear view of the world, and their place in it, along with a deep desire to sustain it"

*Peter Derby-Crook, Chief Executive Officer*

### *Quotes from parents*

"It is important to us that Tanglin is a not for profit school. You notice immediately that the facilities are excellent, that the classrooms and units are neat and well taken care of. It is reassuring to know that all school fee income goes back into the school. For us, curriculum and academics are critical. At Tanglin the children have been able to study the same subjects they would be taught in Holland which makes a future transition home easier. As a multi-lingual family, we also value the school's mother tongue programme. There is a really good balance in lessons and assignments between creativity and content. Teachers don't just tackle subjects on a superficial level but in real depth. I have also found the writing to be of an exceptionally high standard. The fact that Tanglin is not selective but still achieves such amazingly good results says a huge amount for the school.

The great sense of humour and values really stand out at Tanglin. The people are fun and open-minded. There are lovely relationships evident between teachers and students but also between student peers and between staff and parents. The school takes a very sensible, professional yet friendly approach. It is open to talking about anything. I feel that my children are important to the school and my opinion as a parent matters - I feel truly heard. I also admire the respectful, mature relationships between the children. There is less emphasis on being popular or 'cool' but on being a kind, friendly, caring student and friend. The messages and values that the children are taught, such as a recent lesson on humility in the Senior School, are important.

My children have thrived academically, made great friends, feel very much at home and love going to school. I couldn't ask for more!"

*Sara Marseille*



**United World College of South East Asia (UWCSEA)**

*Address:* Dover Campus: 1207 Dover Road, Singapore 139654

*East Campus:* 1 Tampines Street, 73 Singapore 528704

*Website:* [www.uwcsea.edu.sg](http://www.uwcsea.edu.sg)

*Email:* [admissions@uwcsea.edu.sg](mailto:admissions@uwcsea.edu.sg)

*Telephone:* +(65) 6775 5344

*Gender:* Co-educational

*Curriculum:* British and IB

*Ages:* 4 to 18



The United World College of South-East Asia (UWCSEA) is a particular favourite with expat parents. The school is renowned for its academic rigour and high expectations of its students in all aspects of school life. The school is represented by over 200 sporting teams and has an extensive extra-curricular programme including a variety of sports, arts and cultural activities. Any one year will see up to 20 drama productions, 15 concerts, a number of art exhibitions and a host of formal and informal performance events. The school has boarding facilities at both campuses which currently house about 200 students. Facilities at both campuses are world-class and include a number of theatres, a climbing wall, floodlit swimming pools and AstroTurf fields, among many more.

***What the school says***

UWCSEA provides a challenging, holistic education with an emphasis on academic achievement, service to others, teamwork and leadership. The College has two campuses in Singapore – Dover and East. Both campuses are overseen by the Head of College and have the same Board of Governors. However, each campus has its own academic and administrative staff to support the delivery of UWCSEA's world-class education. There are more than 5,000 students on both campuses of more than 70 nationalities. Both campuses have an infant and junior school (which form a primary school), a middle school and high school.

***Curriculum***

The school follows the International Baccalaureate Primary Years Programme (PYP) and Middle Years Programme (MYP). Students in Grade 9 and 10 prepare for the IGSCE examinations, while most Grade 12 students study toward the IB Diploma.

***Fees***

Fees for the 2017/2018 year range from 29,970 SGD a year for Kindergarten 1 up to 37,065 a year in Grade 12. The fees are payable before the start of each of the three school terms in equal instalments, and are roughly double for boarding school. There are also a number of additional fees, including application fees, a once-off enrolment fee of 3,210 SGD, and a development levy.

### ***Location***

The school has two campuses – one in Dover Road on Singapore's West Coast, and a second campus at Tampines on the East Coast of Singapore.

### ***From the head teacher***

“In an age where change is remoulding our world faster than ever before, we at UWCSEA believe it is dangerous to revere the learned at the expense of the learners. Too much is changing too quickly for self-congratulatory insularity, and it is all too easy for even the best qualified adults to inadvertently educate young people for the recent past instead of the students’ future.

That is why, at UWCSEA, we are unambiguous in our mission: we provide a values driven education in which five elements – academics, activities, outdoor education, personal and social education and service – are fused so that students are equipped with the skills, ambition and compassion to impact ethically and significantly in a global context.

It is not a question of compromise in any one area: academically, for example, a third of our students score above 40 points in the IB Diploma each year. But that is not achieved by a narrow focus on academics. Instead, all our students go on expeditions in the region and beyond; they participate in activities that help them to identify and pursue their passions; they are required to serve others at a College, local and regional level through an extensive service programme; and they learn about themselves and their relationships with others through our personal and social education programme. In this way, we offer a holistic, experiential education that opens doors to lifelong learning.”

*Chris Edwards, Head of College*

## **FOR MORE INFORMATION**

Visit the Expat Arrivals International Schools Guide online for a list of international schools at nursery, primary and secondary level in Singapore.

<http://www.expatarrrivals.com/singapore/international-schools-in-singapore>

For more information on moving to Singapore, including accommodation, healthcare and transport in the country, have a look at our Expat Guide to Singapore:

<http://www.expatarrrivals.com/singapore/moving-to-singapore>